



FOR LEASE

# 1235 BAY STREET

**CALLIE M. OSLER\***

Senior Sales Associate  
+1 647 943 4163  
callie.osler@cbre.com

**KIRK BAYLIS\***

Senior Sales Associate  
+1 647 923 9243  
kirk.baylis@cbre.com

**JEFF FRIEDMAN\***

Vice Chairman  
+1 416 815 2363  
jeff.friedman@cbre.com

\*Sales Representative



# AVAILABILITY SUMMARY

SUITE	SIZE	AVAILABLE	COMMENTS
Suite 1003	2,353 SF	Immediate	Ready Set Go Model Suite <a href="#">Virtual Tour</a>
Suite 1001	1,968 SF	Immediate	Built Out
Suite 900	9,141 SF	Immediate	Built Out
Suite 605	1,424 SF	Immediate	Built Out
Suite 401	4,033 SF	Immediate	Built Out
Suite 400	3,442 SF	Immediate	Built Out

1235 BAY STREET, TORONTO, ON

FOR LEASE

# DETAILS

SUITE 1003 // 2,353 SQ. FT.



READY, SET, GO

CLICK HERE FOR : [VIRTUAL TOUR](#)

Built out with 1 office, 1 meeting room,  
a kitchenette and open work space.  
Furnished.

## OCCUPANCY

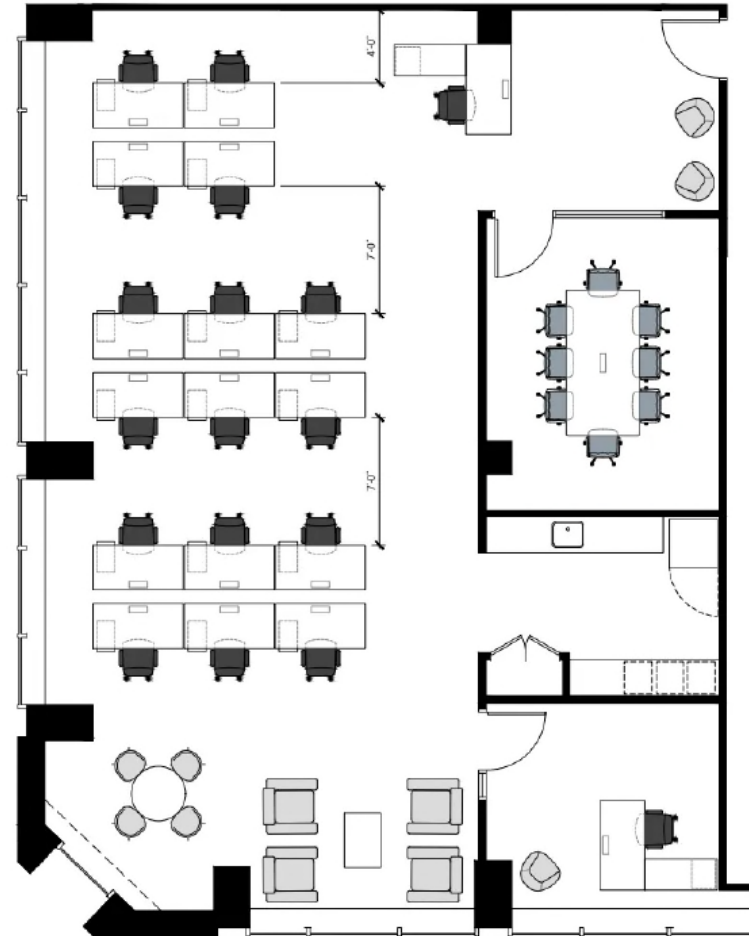
Immediate

## NET RENT

Please call agents to discuss

## ADDITIONAL RENT (2025 EST.)

\$30.06 per sq. ft.



This disclaimer shall apply to CBRE Limited, Real Estate Brokerage, and to all other divisions of the Corporation; to include all employees and independent contractors ("CBRE"). The information set out herein, including, without limitation, any projections, images, opinions, assumptions and estimates obtained from third parties (the "Information") has not been verified by CBRE, and CBRE does not represent, warrant or guarantee the accuracy, correctness and completeness of the Information. CBRE does not accept or assume any responsibility or liability, direct or consequential, for the Information or the recipient's reliance upon the Information. The recipient of the Information should take such steps as the recipient may deem necessary to verify the Information prior to placing any reliance upon the Information. The Information may change and any property described in the Information may be withdrawn from the market at any time without notice or obligation to the recipient from CBRE. CBRE and the CBRE logo are the service marks of CBRE Limited and/or its affiliated or related companies in other countries. All other marks displayed on this document are the property of their respective owners. All Rights Reserved.

# CBRE



# PHOTOS

SUITE 1003 // 2,353 SQ. FT.

CLICK HERE FOR : [VIRTUAL TOUR](#)



1235 BAY STREET, TORONTO, ON

FOR LEASE

# DETAILS

SUITE 1001 // 1,968 SQ. FT.

Model suite built out with a meeting room, reception area, kitchenette and open work area.

## OCCUPANCY

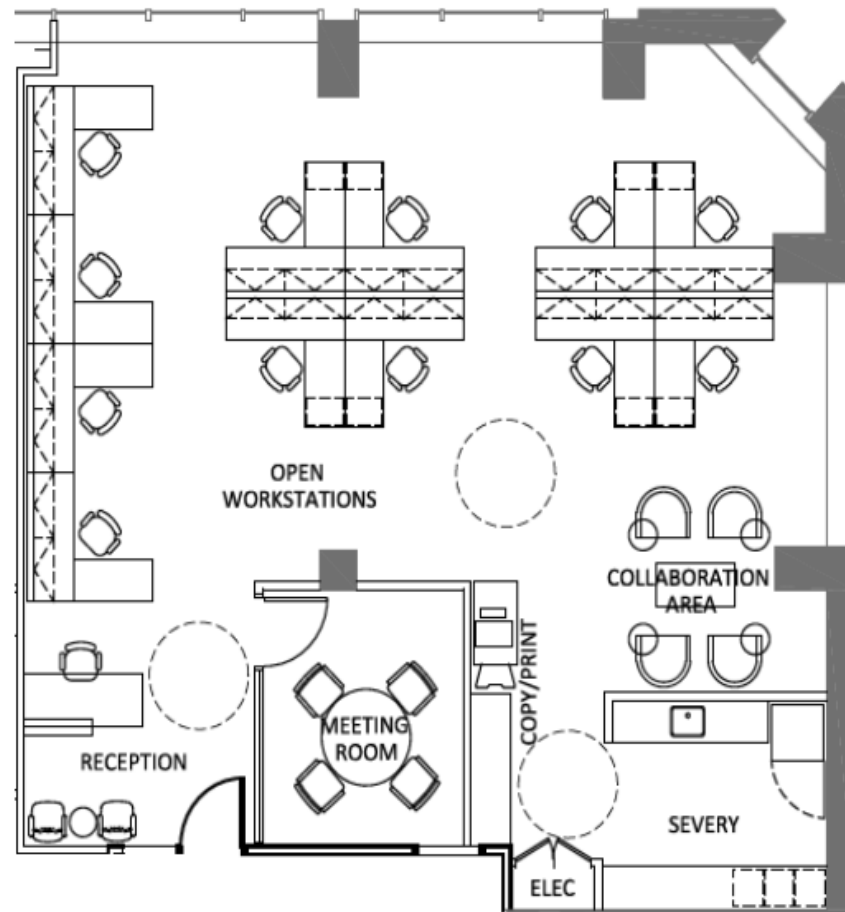
Immediate

## NET RENT

Please call agents to discuss

## ADDITIONAL RENT (2025 EST.)

\$30.06 per sq. ft.



This disclaimer shall apply to CBRE Limited, Real Estate Brokerage, and to all other divisions of the Corporation; to include all employees and independent contractors ("CBRE"). The information set out herein, including, without limitation, any projections, images, opinions, assumptions and estimates obtained from third parties (the "Information") has not been verified by CBRE, and CBRE does not represent, warrant or guarantee the accuracy, correctness and completeness of the Information. CBRE does not accept or assume any responsibility or liability, direct or consequential, for the Information or the recipient's reliance upon the Information. The recipient of the Information should take such steps as the recipient may deem necessary to verify the Information prior to placing any reliance upon the Information. The Information may change and any property described in the Information may be withdrawn from the market at any time without notice or obligation to the recipient from CBRE. CBRE and the CBRE logo are the service marks of CBRE Limited and/or its affiliated or related companies in other countries. All other marks displayed on this document are the property of their respective owners. All Rights Reserved.

**CBRE**

1235 BAY STREET, TORONTO, ON

FOR LEASE

# DETAILS

SUITE 900 // 9,141 SQ. FT.

Built out with offices, meeting rooms, open area and kitchen.

## OCCUPANCY

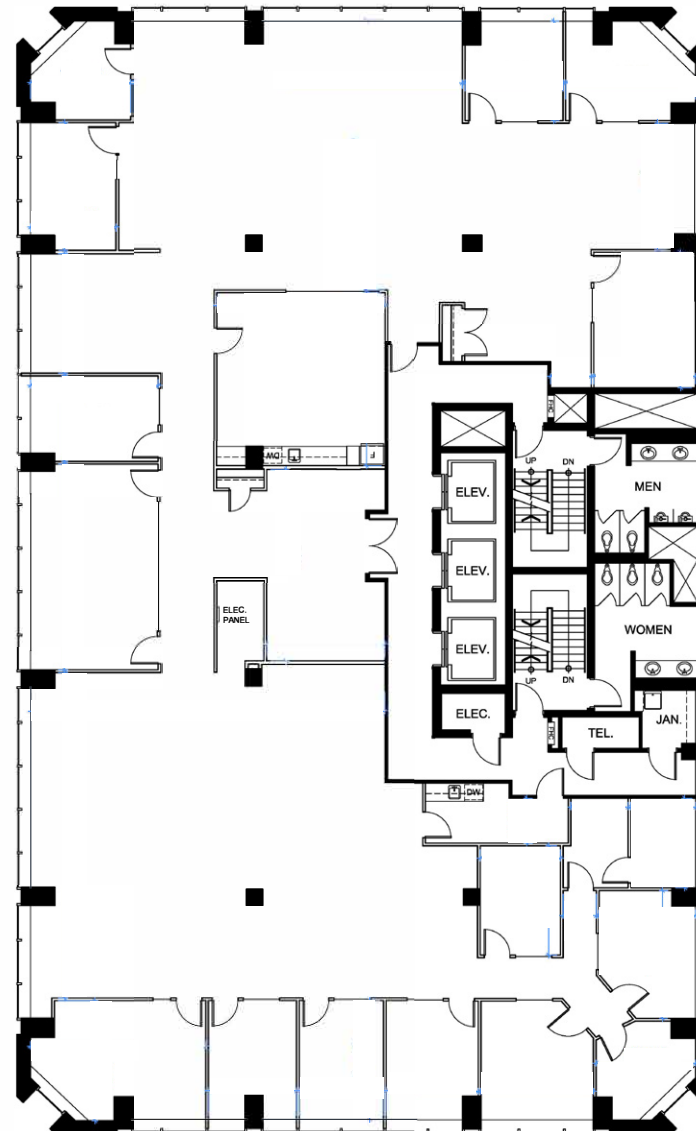
Immediate

## NET RENT

Please call agents to discuss

## ADDITIONAL RENT (2025 EST.)

\$30.06 per sq. ft.



This disclaimer shall apply to CBRE Limited, Real Estate Brokerage, and to all other divisions of the Corporation; to include all employees and independent contractors ("CBRE"). The information set out herein, including, without limitation, any projections, images, opinions, assumptions and estimates obtained from third parties (the "Information") has not been verified by CBRE, and CBRE does not represent, warrant or guarantee the accuracy, correctness and completeness of the Information. CBRE does not accept or assume any responsibility or liability, direct or consequential, for the Information or the recipient's reliance upon the Information. The recipient of the Information should take such steps as the recipient may deem necessary to verify the Information prior to placing any reliance upon the Information. The Information may change and any property described in the Information may be withdrawn from the market at any time without notice or obligation to the recipient from CBRE. CBRE and the CBRE logo are the service marks of CBRE Limited and/or its affiliated or related companies in other countries. All other marks displayed on this document are the property of their respective owners. All Rights Reserved.

# CBRE

1235 BAY STREET, TORONTO, ON

FOR LEASE

# DETAILS

SUITE 605 // 1,424 SQ. FT.

Built out with with reception area, meeting rooms, open area and kitchenette.

## OCCUPANCY

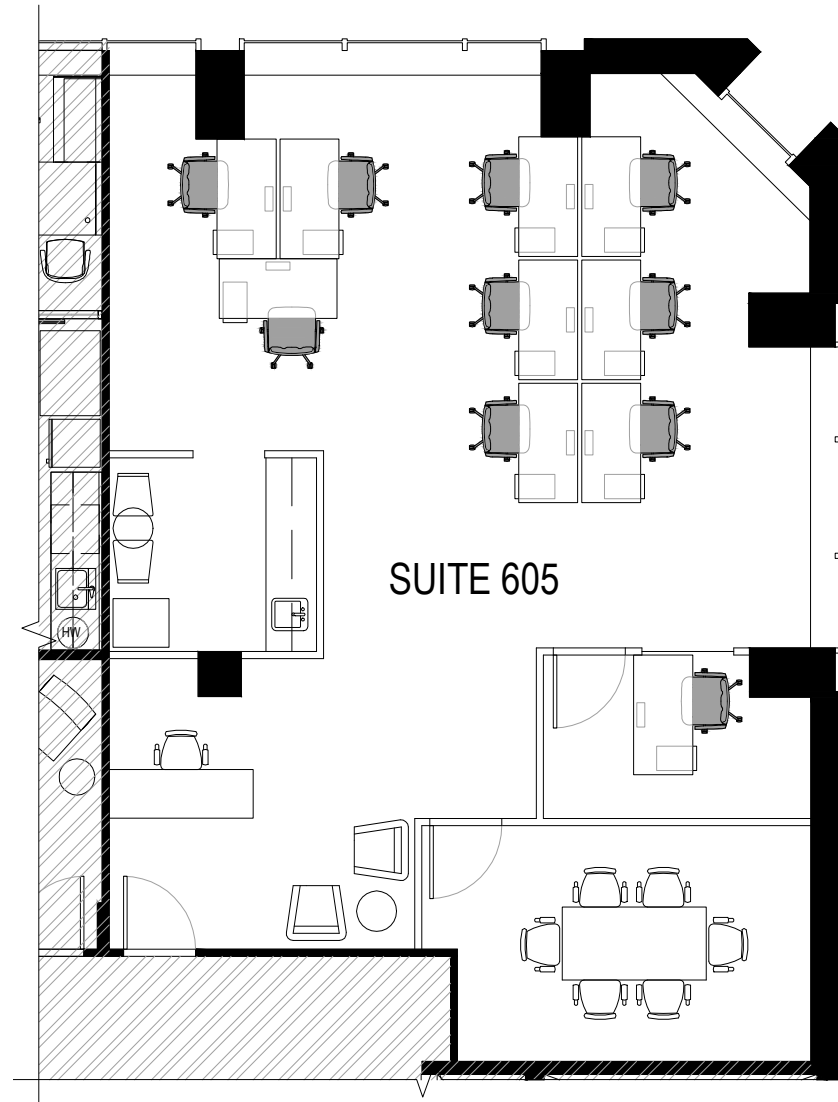
Immediate

## NET RENT

Please call agents to discuss

## ADDITIONAL RENT (2025 EST.)

\$30.06 per sq. ft.



This disclaimer shall apply to CBRE Limited, Real Estate Brokerage, and to all other divisions of the Corporation; to include all employees and independent contractors ("CBRE"). The information set out herein, including, without limitation, any projections, images, opinions, assumptions and estimates obtained from third parties (the "Information") has not been verified by CBRE, and CBRE does not represent, warrant or guarantee the accuracy, correctness and completeness of the Information. CBRE does not accept or assume any responsibility or liability, direct or consequential, for the Information or the recipient's reliance upon the Information. The recipient of the Information should take such steps as the recipient may deem necessary to verify the Information prior to placing any reliance upon the Information. The Information may change and any property described in the Information may be withdrawn from the market at any time without notice or obligation to the recipient from CBRE. CBRE and the CBRE logo are the service marks of CBRE Limited and/or its affiliated or related companies in other countries. All other marks displayed on this document are the property of their respective owners. All Rights Reserved.

**CBRE**

# DETAILS

SUITE 401 // 4,033 SQ. FT.

Built out suite with 2 private offices, conference room, servery, and open work area.

## OCCUPANCY

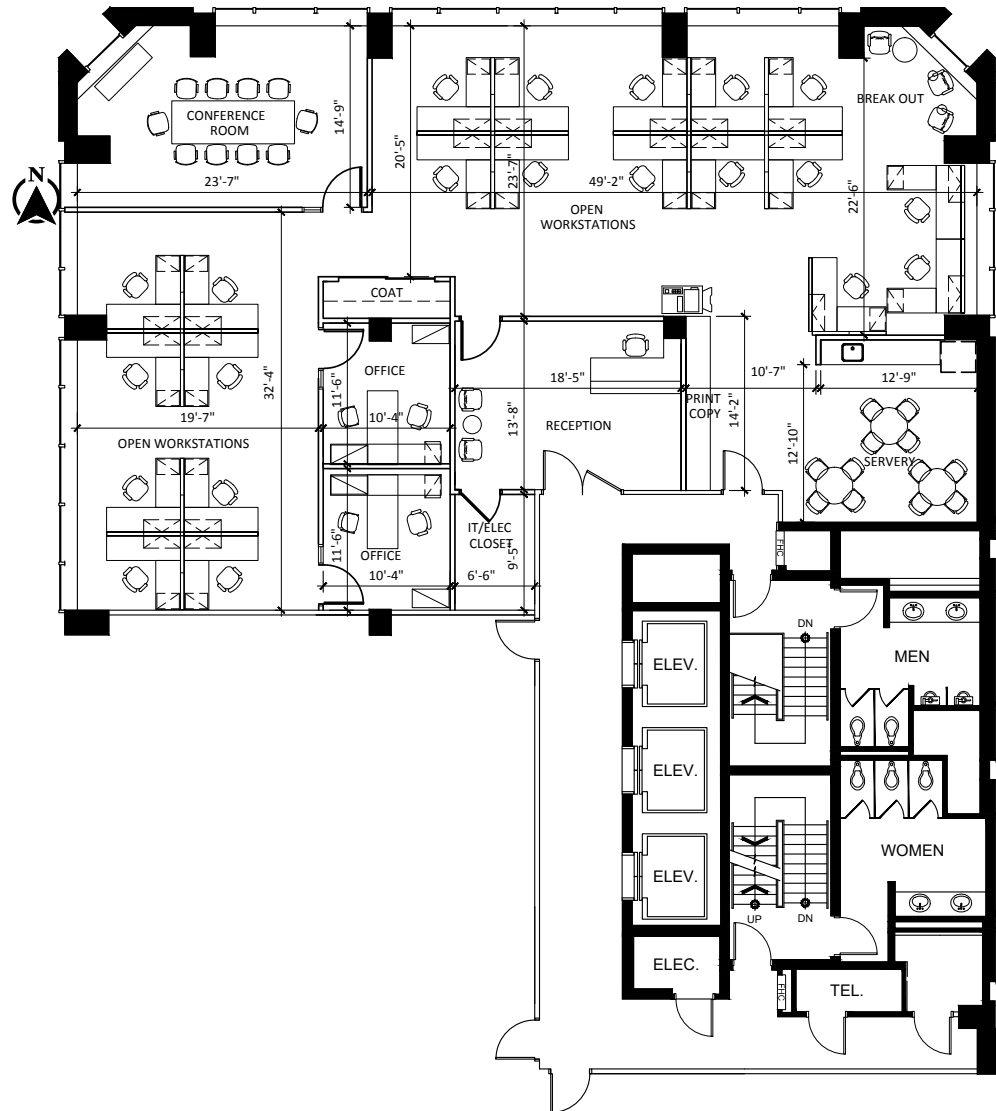
Immediate

## NET RENT

Please call agents to discuss

## ADDITIONAL RENT (2025 EST.)

\$30.06 per sq. ft.





# PHOTOS

SUITE 401 // 4,033 SQ. FT.



# DETAILS

SUITE 400 // 3,442 SQ. FT.

Built out model suite with 2 offices, meeting room, boardroom, reception, and open area.

## OCCUPANCY

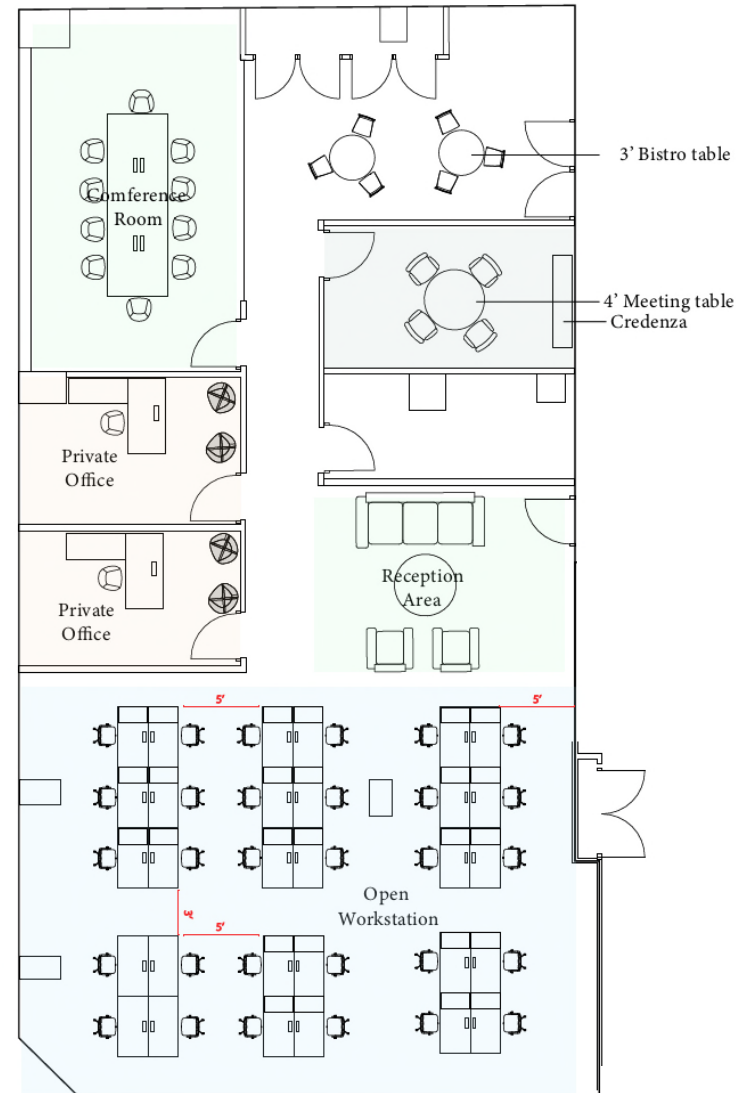
Immediate

## NET RENT

Please call agents to discuss

## ADDITIONAL RENT (2025 EST.)

\$30.06 per sq. ft.



# LOCATION





FOR LEASE

# 1235 BAY STREET



**CALLIE M. OSLER\***

Senior Sales Associate

+1 647 943 4163

callie.osler@cbre.com

**KIRK BAYLIS\***

Senior Sales Associate

+1 647 923 9243

kirk.baylis@cbre.com

**JEFF FRIEDMAN\***

Vice Chairman

+1 416 815 2363

jeff.friedman@cbre.com

\*Sales Representative

**CBRE LIMITED**

Real Estate Brokerage

145 King Street West, Suite 1100

Toronto, ON M5H 1J8

This disclaimer shall apply to CBRE Limited, Real Estate Brokerage, and to all other divisions of the Corporation; to include all employees and independent contractors ("CBRE"). The information set out herein, including, without limitation, any projections, images, opinions, assumptions and estimates obtained from third parties (the "Information") has not been verified by CBRE, and CBRE does not represent, warrant or guarantee the accuracy, correctness and completeness of the Information. CBRE does not accept or assume any responsibility or liability, direct or consequential, for the Information or the recipient's reliance upon the Information. The recipient of the Information should take such steps as the recipient may deem necessary to verify the Information prior to placing any reliance upon the Information. The Information may change and any property described in the Information may be withdrawn from the market at any time without notice or obligation to the recipient from CBRE. CBRE and the CBRE logo are the service marks of CBRE Limited and/or its affiliated or related companies in other countries. All other marks displayed on this document are the property of their respective owners. All Rights Reserved.